

DS201

Design Series

OCEANUS

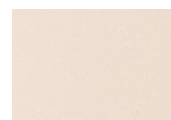


Size	212x212x92cm
Persons	3 seats
Empty weight	410 kg
Water capacity	1300 liter
Air jets	10
Hydro jets	48
Control system	Gecko
Inverter system	No
Jet pump	1 x two-speed 3HP 1 x one-speed 3HP
Heated airblower	Yes
Circ. pump	Aquaflow 1/8 HP
Heater	3 KW
LED large spotlight	Yes
LED waterfall/ fountain	No
Perimeter LED light system	Yes
Fitting with LED backlight	No
Ozone and mixing unit	Yes
Filtration system	Paper / 1 x 6.97 m2
Head cushions	3
Foam on shell	25-30mm
Thermo lock system	Yes
ARCTIC insulation bag	No
Base	Fiberglass
Thermal cover	LUXE
Jets	Chrome
Frame	Wood
Cabinet	Wood replacement
IN.Stream Stereo System	Optional
IN.Touch WiFi Module	Yes
Rolldeck	Optional

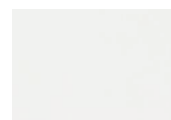
Shell colour



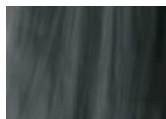
Sterling Silver



Alba



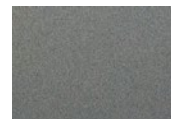
White



Pearl Shadow



Summer Sapphire

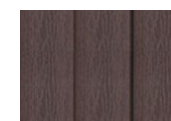


Winter Solstice

Cabinet colour

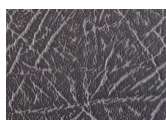


Dark Grey

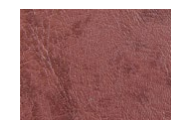


Brown

Cover colour



Charcoal Grey



Brown

Proud to be different

Winterskin is always included!

Thermo locked cabinet.
Solid pan fiberglass base.
Galvanized steel frame optional.



Distributed by:

